

CREDITS

Stephanie Comilang & Simon Speiser *Piña Why is the Sky Blue?*

Mixed-media video installation; virtual reality headsets, pillows.

Video: 28 minutes

VR: 16 minutes

Camera:

Stephanie Comilang and Simon Speiser

Editing:

Stephanie Comilang and Simon Speiser

With:

Kankwana Canelos, Janet Dolera, Rupay Gualinga and Alba Pavón

Color correction:

Peter Cairns

Fixers:

Remigio Tapia, Roger Federico

Translators:

Nicole Mejia Cruz, Diana Rocío Ante, Natalia Rolon

VR

Piña:

Lukresia

Wardrobe:

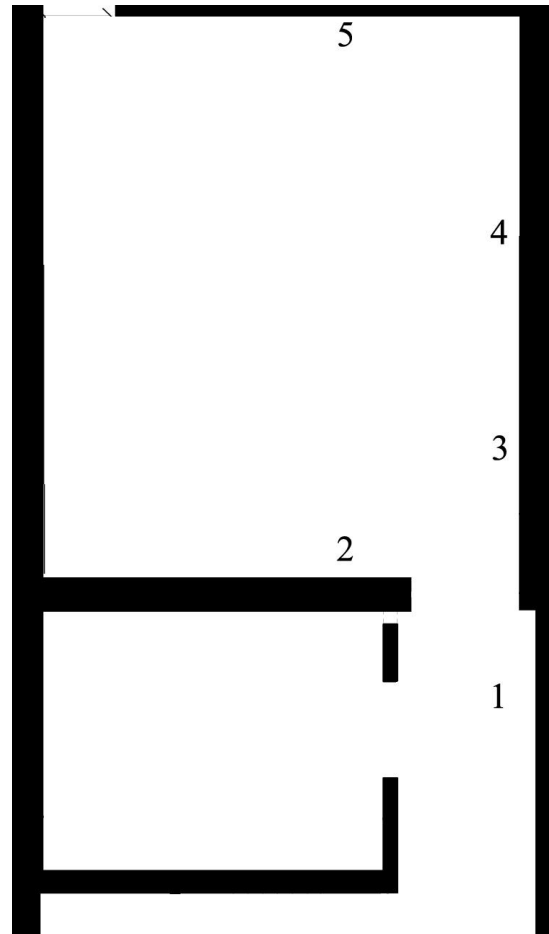
Carl Jan Cruz Styling, Gio Mendoza

Music

Palmistry, Pan Daijing & DJ Hvad,
Why Be, Angel Wei

Special Thanks

Canada Council for the Arts, John Hampton, Guillaume Airiaud, Gwen Bautista, Enzo Camacho, Steve & Emily Comilang, Ernest Diño, Rosalia Namsai Engchuan, Adam Fearon, Ahmed Fouad, Chris Fussner & Tropical Futures, John Holten, Alexander Iezzi, Lisa Long, Ginoe Ojoy, Karen Pavon, Sabine & Lotte Speiser, Lucia Tapia, Caique Tizzi, Inayuk Yanda Montahuano Ushigua and his family, Jiyu Uyunkar.



1. *Ch'awar yura rich'aq allu*, 3D printing on woven piña fabric, 2022
2. *Wayu*, 3D printing on woven piña fabric, 2022
3. *Muru*, 3D printing on woven piña fabric, 2022
4. *Chirimaway*, 3D printing on woven piña fabric, 2022
5. *Ñawi-kuna*, 3D printing on woven piña fabric, 2022